



HEALTH AND WELLBEING BOARD: 4 DECEMBER 2025
REPORT OF LLR SEND AND INCLUSION ALLIANCE

Purpose of report

1. The purpose of this report is to present to the Health & Wellbeing Board a progress update of Phase 2 of the work of the LLR SEND and Inclusion Alliance (SIA): SEND and Alternative Provision Change Programme Partnership (SEND & AP CPP) and the approach to phase 3 and beyond.

Recommendation

2. The Board is asked to:
 - (a) Note the progress of Phase 2 of the LLR SEND and Inclusion Alliance (SEND & AP CPP) and the approach to Phase 3 and beyond;
 - (b) Continue to support and work in partnership with the LLR SIA;

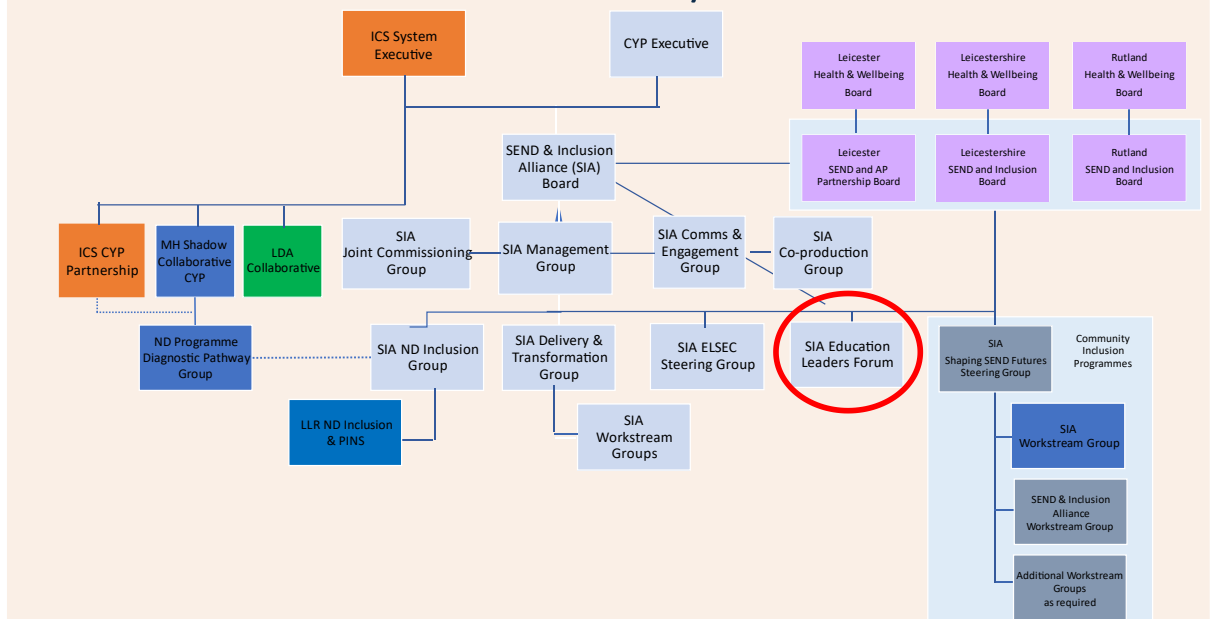
Policy Framework and Previous Decision

3. Partners have signed the SIA Memorandum of Understanding (in appendix 2) to work in partnership to deliver the expectations of phase 3 of the (SEND & AP CPP) and, in the longer term, improve outcomes and lived experience for children and young people with SEND.

Background

4. LLR are the East Midlands representative for the national (SEND & AP CPP). The governance structure can be viewed below:

SEND and Inclusion Alliance 2025/26 v8.5



5. CPP phase 2 impact – to meet needs at the right time are illustrated below:
- a. **Alternative provision (Meeting Need):**
 - i. Embedding 3 tier Alternative Provision model
 - ii. Alternative Provision handbook guide (co-produced with school reps) across the city
 - iii. A digital solution is being developed to enable services to monitor and quality assure Alternative Provision placements
 - b. **ELSEC (Speech & Language)**
 - i. Over 400 children with lower-level speech and language needs have been supported.
 - ii. A speech & Language toolkit launched across LLR
 - iii. ELSEC continues with focus on areas of high deprivation
 - c. **PINS (Neurodivergence)**
 - i. 40 LLR Primary Schools participated.
 - ii. Helped bridge gaps in relationships between schools and parents and enabled parents/carers to create support groups with schools
 - iii. E-learning available for all schools
 - iv. Plan to extend to secondary schools
 - d. **Inclusion (Internal Alternative Provision)**
 - i. Lead by Headteacher of Imperial Avenue. Over 64 Leicester primary schools signed up to this new network
 - ii. Providing advice and quality assuring provision
 - iii. As network grows, more schools interested in developing onsite internal Alternative Provision to enhance Mainstream inclusion offer across the city

6. The programme is in the final phase and will conclude in March 2026. LLR Partners have signed a Memorandum of Understanding to form a SEND & Inclusion Alliance, the purpose of which is to continue to embed the positive initiatives piloted through the CPP test and learn process beyond the end of March 2026. It will take a lead on shaping priorities for aligned commissioning, co-production, and community-led inclusion to help children and young people with SEND to thrive.

Proposals/Options

7. It is intended to continue to embed the principles of the SEND & Inclusion Alliance beyond the conclusion of the SEND & AP CPP in March 2026
8. During 2025 and 2026 the Alliance's primary role will be to co-ordinate:
 - iv. the delivery of the national SEND and Alternative Provision Change Programme Partnership;
 - v. the delivery of the LLR SEND Joint Commissioning Strategy;
 - vi. the roll-out of the LLR community inclusion programme to deliver the Local Inclusion Support Offer;
 - vii. integrated partnership working to improve quality of outcomes and lived experience for children and young people with SEND.

Consultation/Patient and Public Involvement

9. The SEND & Inclusion Alliance vision and strategic priorities beyond the deliverables of the CPP have been co-produced with the LLR Parent Carer Forums and underpinned by Young Researchers Young Voices research (2022-25).

Resource Implications

10. The Alliance has been established through DfE ringfenced Change Programme Partnership funding to deliver the Local Inclusion Support Offer. Funding allocations have been made and need to be spent by the end of March 2026.

Conclusion

11. The purpose of this report is to provide the Health & Wellbeing Board with an update of Phase 2 of the work of the SEND & Inclusion Alliance: SEND and Alternative Provision Change Programme Partnership and seek continued support for the work of the programme during phase 3 and beyond.

Background papers

12. None.

Officer to contact

Fay Bayliss

Director; LLR SEND & Inclusion Alliance

Mobile: 07717 346584

fay.bayliss@nhs.net